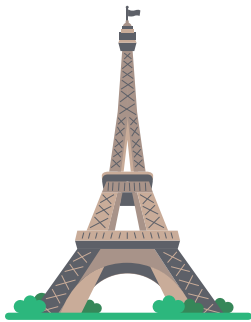


# Famous Structures

## Fact Sheet

1



### Eiffel Tower

**Location:** ..... Paris, France  
**When was it built?** ..... 1887  
**Why was it built?** ..... Tourism  
**Main building materials:**..... Cast iron and steel  
**Height** ..... 324m to the top

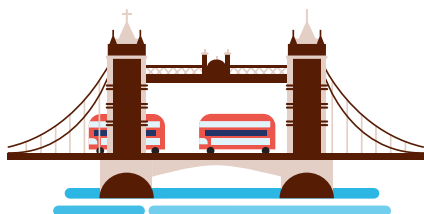
2



### Grand Canal

**Location:** ..... Venice, Italy  
**When was it built?** ..... 1710  
**Why was it built?** ..... As a water way  
**Dimensions:**..... 3.8 km long

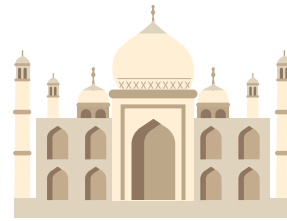
3



### Tower Bridge

**Location:** ..... London, United Kingdom  
**When was it built?** ..... 1886  
**Why was it built?** ..... Access to the East of London  
**Main building materials:**..... Steel, granite, and stone masonry  
**Dimensions:**..... 286.5m long and 18.3m wide

4



### Taj Mahal

**Location:** ..... Agra, India  
**When was it built?** ..... 1631  
**Why was it built?** ..... Built as a tomb for Mumtaz Mahal "Chosen One of the Palace" by her husband, the Mughal emperor Shah Jahān  
**Main building materials:**..... Brick-in-lime mortar, red sandstone, marble, and precious stones  
**Height** ..... 73m

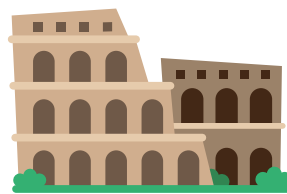
5



### Statue of Christ the Redeemer

**Location:** ..... Rio de Janeiro, Brazil  
**When was it built?** ..... 1922  
**Why was it built?** ..... Used as a shelter and for religious purposes  
**Main building materials:**..... Concrete and soap stone tiles  
**Height:** ..... 30m

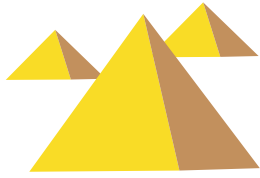
6



### Colosseum

**Location:** ..... Rome, Italy  
**When was it built?** ..... 70 AD  
**Why was it built?** ..... Arena for entertainment  
**Main building materials:**..... Travertine, concrete, and bricks  
**Dimensions:**..... 189m long and 156m wide

7



## Great Pyramids of Giza

**Location:** ..... Giza, Egypt  
**When was it built?** ..... 2550 BC  
**Why was it built?** ..... Tombs for Egyptians Pharaohs  
**Main building materials:**..... Limestone, granite, and mud bricks  
**Dimensions:**..... 147m high and 230m wide

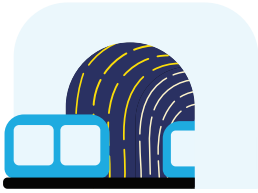
10



## The Atlantic Road

**Location:** ..... Atlanterhavsveien, Norway  
**When was it built?** ..... 1983  
**Why was it built?** ..... Access between two villages.  
**Main building materials:**..... Asphalt road surface and crushed stone aggregates.  
**Dimensions:**..... 8.3 km long, wide 6.5

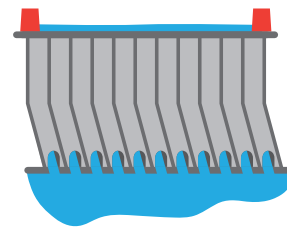
8



## Bund Sightseeing Tunnel

**Location:** ..... Shanghai, China  
**When was it built?** ..... 2007  
**Why was it built?** ..... For train traffic  
**Main building materials:**..... Concrete and steel  
**Dimensions:**..... 646.7m long

11



## Three Gorges Dam

**Location:** ..... Hubei, China  
**When was it built?** ..... 1994  
**Why was it built?** ..... To prevent flooding  
**Main building materials:**..... Concrete and steel  
**Dimensions:**..... 2335m long, 185m high

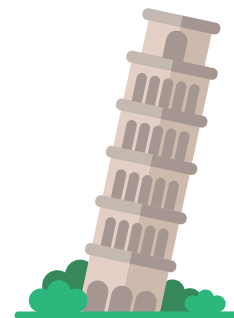
9



## Statue of Liberty

**Location:** ..... New York City, U.S.A  
**When was it built?** ..... 1875  
**Why was it built?** ..... Given to the United States from France to celebrate the friendship during the American Revolution.  
**Main building materials:**..... Gold, copper, steel, and cast iron.  
**Height:** ..... 93m

12



## Leaning Tower of Pisa

**Location:** ..... Pisa, Italy  
**When was it built?** ..... 1173  
**Why was it built?** ..... A bell tower for the Cathedral  
**Main building materials:**..... Marble, lime, and stone  
**Height:** ..... 57m